



ECOSAFE TECHNOLOGY

**Hardware and software
solutions for the safety,
sustainability and optimization
of the jobsite ecosystem**

Your 360° solutions provider!

Technological pioneers in the jobsite ecosystem

For companies, it is now essential to equip themselves with strategic tools to optimize TIME, manage METHODS, enhance COMPETENCIES, collect and analyze DATA for Business Intelligence activities and Predictive Analysis.

Research & Development

We design and develop software systems and hardware devices to innovate company processes

Safety and Support

We integrate applications for personnel and machines safety, as well as to ensure technical support

Environmental Impact

We study solutions to reduce environmental impact optimizing time-to-market and costs



IN-PLAN ECOSYSTEM

IN-PLAN is the technological ecosystem for both civil and industrial applications that allows managing time to compete in markets, methods to increase quality, and competencies to ensure business activities. IN-PLAN's Hardware and Software solutions are intuitive, modular, constantly evolving, customizable, adaptable to any activity, and ensure high levels of digitization and usability of data.

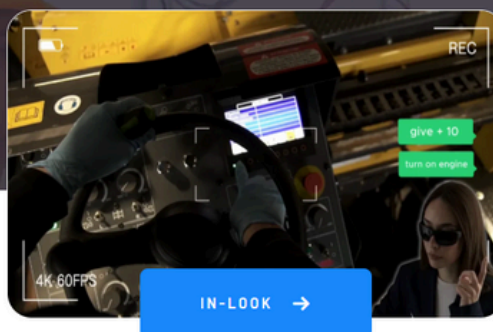
The modules are independent, but interoperability allows data to be integrated and made available for processing and analysis in business intelligence activities: by integrating intelligent systems, augmented reality, and algorithms, all data are collected and made available to support continuous improvement strategies to take business operations to the next level.

Enhancing your environment

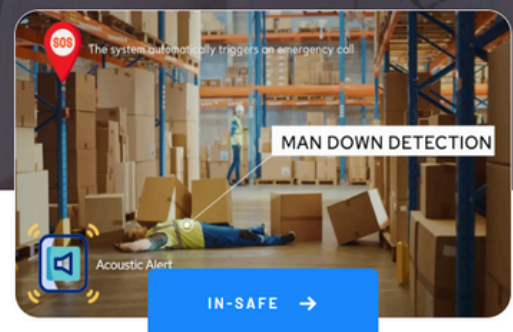
IN-PLAN MODULES



Intelligent platform to design, create and monitor individual procedures or entire guided processes even through smart glasses (AR glasses).



Powerful system to perform remote assistance and real-time technical support through smart glasses (AR glasses).



Intelligent system that can be integrated into personal protective equipment (PPE), capable of detecting hazardous situations and managing alerts.

ECOSAFE TECHNOLOGY

IN-STEP

Design, generate and monitor all business processes

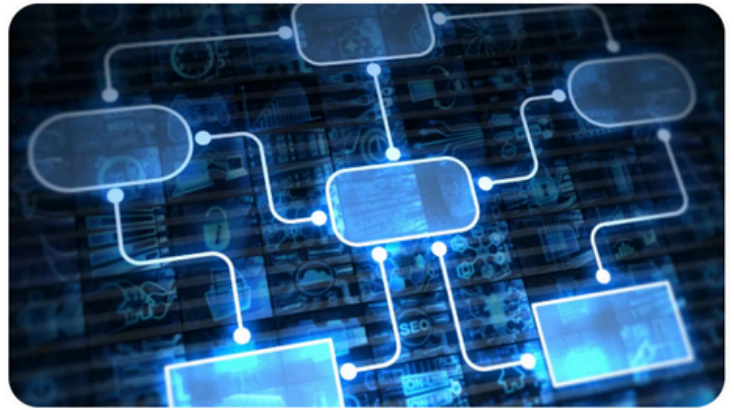
Processes "at a glance"!

IN-STEP is the cutting-edge platform that allows you to design, generate, and monitor all business processes. It enables the creation of interactive procedures for any workflow to avoid errors, ensure training, increase quality, and optimize the time and cost of all activities.

IN-STEP is a powerful tool characterized by extreme ease of use: it has an intuitive user interface and no specific training is required to be immediately operational.

The system for creating Step-by-Step & Error-Free procedures

- ✓ Eliminate errors
- ✓ Optimize time and methods
- ✓ Preserve the wealth of expertise



- IN-STEP

Step-by-step guided processes and training ... eliminate errors and increase quality !

With IN-STEP, it's possible to visually design processes composed of multiple steps, thus breaking down even complex activities into simpler blocks. It's possible to create branched procedures for managing variables by documenting different options, and personnel are guided step by step in a simple and rapid manner. Tutoring activities and training sessions can also be conducted in the field in an immersive and engaging way.

- ✓ Steps Creation - Comprehensive integrated environment with a set of tools for designing and drafting 2D steps that will form the process
- ✓ Process Creation - Graphic environment for assembling steps and composing the process with the ability to create linear and non-linear processes, branches, and multiple-choice solutions

With IN-STEP, all workflow can be codified and made available to ensure adherence to procedures, avoid errors, optimize time and methods, increase work quality, and enhance safety for operators. Data regarding entire processes, individual steps, or specific procedures are always accessible and can be stored, exported, and analyzed for Business Intelligence activities.



Unlike other systems for designing business processes, IN-STEP is a “turnkey” solution that solves all compatibility issues because its cloud-based localization does not require installations or configurations, ensuring access to the latest updated version of created projects and preventing outdated documents from being viewed.

IN-STEP can be used through all common browsers and is compatible with various multimedia tools. The ability to generate QR codes, which can be scanned by smart devices, eliminates the introduction of potential errors.

Data management

Log Analysis - Every operation performed on a process in the field is recorded and saved in a database, allowing the desktop client to analyze all data for various business needs.

MES Connectors - It's possible to design and implement custom connectors for the MES system used to integrate data from IN-STEP into the company's information system.

Operator Access - It's possible to log in with a specific field operator and track all operations performed on a particular process.

Data Export - Data can be exported in various formats (Excel, CSV, JSON, and others) to enable performance analysis.

QR Code Linking

Each process can be retrieved in real-time by linking it to a unique QR code readable, for example, by mobile devices or augmented reality glasses (AR Glasses)

Operator Safety

The operator has no distractions, information is projected into the field of view, hands are free, and integration with any Personal Protective Equipment (PPE) is ensured

Security and privacy of all data and information

IN-STEP is a secure system to use and respects privacy: data is encrypted, and the platform does not collect or share personal information. Regular backups on protected servers in tested Datacenters ensure data protection.

ECOSAFE TECHNOLOGY

IN-LOOK

Real-time remote assistance

Support "at a glance"!

IN-LOOK is the cutting-edge integrated system, consisting of a cloud platform for the expert technician and augmented reality glasses for the remote operator, which allows for real-time assistance and interaction exactly as if present.

IN-LOOK is a powerful tool characterized by extreme ease of use: it features an intuitive user interface and no specific training is required to be immediately operational.

The system for Real-time & Cost-effective technical assistance management

- ✓ Save time
- ✓ Optimize costs
- ✓ Foster customer loyalty



- Real-time remote assistance

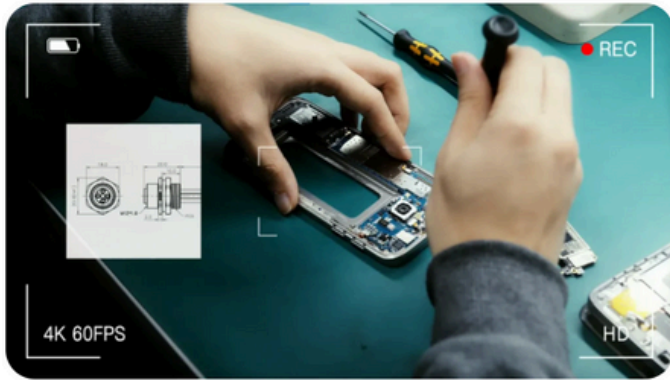
Discover how to provide real-time support to your customers and build customer loyalty!

IN-LOOK is a bi-directional Audio/Video communication system through which the expert technician can see, talk, forward videos and documents, share the screen, send text messages with automatic translation, take snapshots, and use the platform's graphic tools to draw or add elements directly to the images displayed on the integrated display in the glasses. Through the camera of the glasses worn by the remote operator, the expert technician has immediate visual feedback, enabling them to react and intervene promptly, avoiding errors or misunderstandings.

Furthermore, the ability to manage multiple connections allows participation in the session by multiple people simultaneously.

All sessions can be recorded and saved for future reference: it is possible to create guides and educational material to be used for on-field training or tutorials. In addition, an automatic function allows for easily generating reports containing all session data to be archived and later used for analysis, reporting, or Business Intelligence activities.

With IN-LOOK, there is no longer a need to travel: support activities, assistance, site inspections, audits, quality control, training, workflow verification, etc., can be conducted remotely. Deploying specialized personnel for onsite visits becomes more effective as it allows for pre-assessment, optimizing resources, time, and costs.



- ✓ Simple and intuitive interface: the learning curve is practically non-existent
- ✓ Real-time bidirectional communication for direct support
- ✓ Immediate visual feedback to implement timely corrective actions
- ✓ Avoids misunderstandings and difficult explanations
- ✓ Management of multiple connections
- ✓ Session recording
- ✓ Automatically generated reporting
- ✓ Creation of training materials and support for reporting
- ✓ Optimizes downtime
- ✓ Eliminates unnecessary travel
- ✓ Reduces intervention costs and enhances travel efficiency
- ✓ Provides more engaging and immersive support levels
- ✓ Enhances post-sales service
- ✓ Fosters customer loyalty

Compatibility

Unlike other remote assistance systems, IN-LOOK is the "turnkey" solution that solves all compatibility issues, as its cloud-based localization requires no installations or configurations, ensuring access to the latest updated version at all times.

Customization options

If necessary, IN-LOOK can be customized in terms of interface or functionality based on specific usage requirements and is designed to adapt to any work environment with the possibility of installing the On-Premise platform on the customer's computer systems.

Audio/Video connection

The requirements for a remote assistance session are typical of a modern Audio/Video connection: for the system to function correctly, a stable Wi-Fi network is required (both fixed and through a mobile hotspot with a standard data SIM).

Additionally, the platform is capable of adjusting the image quality automatically to the available bandwidth to ensure the best audio quality.

Security and privacy

IN-LOOK is a secure system to use and respects privacy: data is encrypted, and the platform does not collect or share personal information. Regular backups on protected servers in tested Datacenters ensure data protection.

Maximum security for operators

In compliance with international safety standards, IN-LOOK ensures maximum integration with personal protective equipment devices, even replacing them according to the type of hardware used. The operator always has hands-free operation, with information directly displayed on the integrated glasses screen, allowing full attention to the task at hand.

Comprehensive platform for online meetings

IN-LOOK also replaces all the different communication platforms used in the company for video calls and video conferences, allowing for an alternative and secure system to use.

Suitable for any field of application

IN-LOOK is suitable for use in all application fields, even in the most challenging environmental conditions. Its robust structure, cutting-edge design, state-of-the-art integrated technologies, and certifications make the various types of available glasses suitable for any operational requirement.

IN-SAFE Intelligent Personal Safety Wearable Technology system

Invisible Protection: safety "at first"!

IN-SAFE is a technological system that can be integrated into personal protective equipment (PPE) based on intelligent algorithms, it is capable to detect autonomously accident, falls or Man Down situation and automatically triggers emergency calls: motion and environmental parameters are detected while Bluetooth and WIFI connectivity ensures data transfer.

The integration of protective equipment with intelligent sensor systems paves the way for enhanced safety, capable of monitoring not only the worker but also the environment and the correct use of PPE. Sensors, embedded directly into garments and accessories, detect critical movements, GPS data, and environmental or physiological parameters. In this way, IoT networks transform PPE into intelligent tools, connected and interoperable with the surrounding environment, enabling remote monitoring of lone workers and high-risk situations.

Miniature wireless sensors, equipped with low-power artificial intelligence algorithms, can be embedded in PPE while preserving their original ergonomics and aesthetics. This wearable technology must act as constant protection, active only when and where it is truly needed. At the same time, it should assist and support the worker without causing interference or compromising privacy.

The wearable safety system for workers

- ✓ Man Down / Fall detection
- ✓ Autonomously calling system
- ✓ Easy integration with any PPE



- IN-SAFE

Discover how to detect injuries ... and protect the workers!

IN-SAFE is an intelligent platform featuring a wearable hardware device, making it adaptable and usable across various application scenarios, along with a management software interface.

- ✓ Can be integrated with Personal Protective Equipment (PPE)
- ✓ Ready-to-wear / Easy-to-integrate into different environments
- ✓ Turn-Key solution with hardware device and software platform

The sensor monitors key parameters and, through a dedicated smartphone app, provides real-time information. In the event of a "man down" situation, the sensor communicates an alert to the smartphone, which, based on configurable priority criteria, sends emergency calls or SMS messages. The platform is powered by an advanced algorithm for autonomous detection of risk conditions affecting the operator and for managing automatic emergency call procedures. This algorithm ensures precise, robust, and efficient identification of "man down" situations. It has been field-validated and tested against international public benchmark databases, achieving a 99% accuracy rate. Its reliability guarantees rapid detection and alert times while significantly minimizing the risk of data misinterpretation and false positives.

- CERTIFIED PPE FOR HIGH VISIBILITY PROTECTION
- AI TECHNOLOGY
- WIFI AND BLUETOOTH CONNECTION
- MOTION AND ENVIRONMENTAL ACQUISITION DATA IN REAL TIME

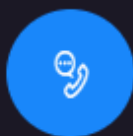


- ✓ Autonomous risk conditions detection
- ✓ Identification of "Man Down" situation
- ✓ Automatic emergency call procedures
- ✓ Validated algorithm that significantly reduces the risk of false positives.

Both the system and software operate transparently to the user, supporting data management architectures that comply with privacy protection regulations and enable data anonymization where applicable or necessary.



Contact us



Call anytime

(+39) 366 8452165



Send email

estsrl@ecosafetechnology.com



Visit our office

Via Tre Settembre, 89 – 47891 Dogana (RSM)